



Inlook Group

Interior building specialist in Finland, Baltic area and Western-Russia

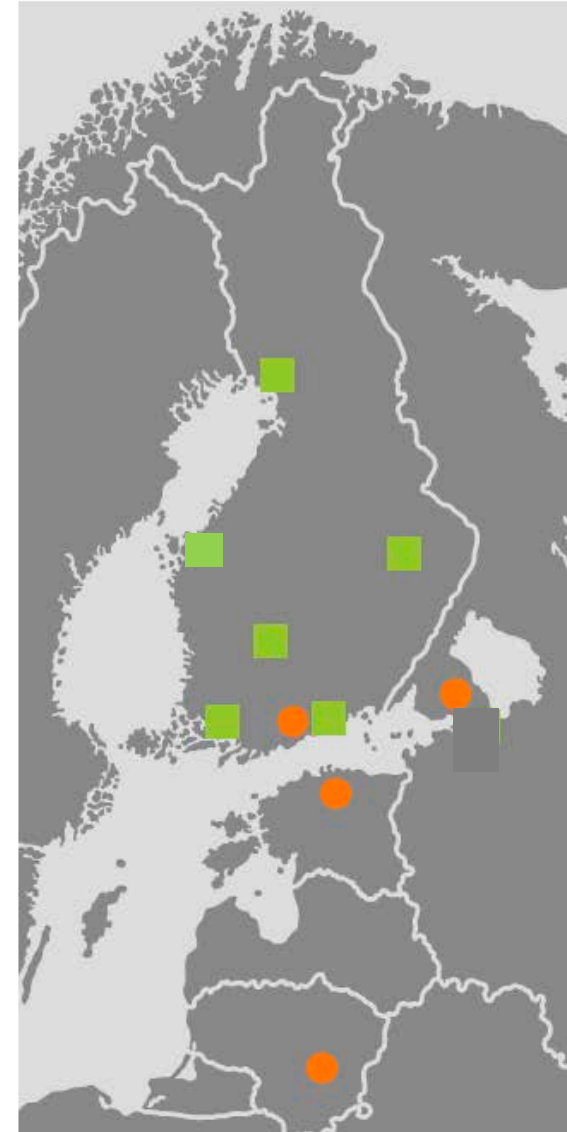
Accounting Period 2014 - 2015

Turnover: 62 milj.euros

Personnel: 425, on the average

Inlook offices:

- Construction Services
- Powder Coating Services



Inlook Group Oy Group Services, Real Estate Management

Inlook Oy

- Helsinki
- Espoo
- Turku
- Tampere
- Kuopio
- Pohjanmaa

Sisärakenne

Kukkola Oy

- Oulu
- Ceilings
- Partition Walls
- Gypsum Walls
- Material Services

Inlook Colortech Oy

- Powder Coating Services
- Sheet Metal Services
- Helsinki

Inlook Color OÜ

- Powder Coating Services
- Sheet Metal Services
- Tallinn

UAB Inlook Vilnius

- Powder Coating Services
- Vilnius

OOO Inlook

Color SP

- Powder Coating Services
- St. Petersburg

Inlook Sisustus Oy

- Interior Building Services
- Acoustic Renderings
- Helsinki

1960's

- 31.3.1967 E. Hiltunen Ky was established

1970's

- Ceiling installations in the former Soviet Union and in the Middle East
- Imports of ceilings and material services

1980's

- 1980 The acquisition of the powder coating business
- 1983 The production of sheet metal
- 1985 The area office to Kuopio

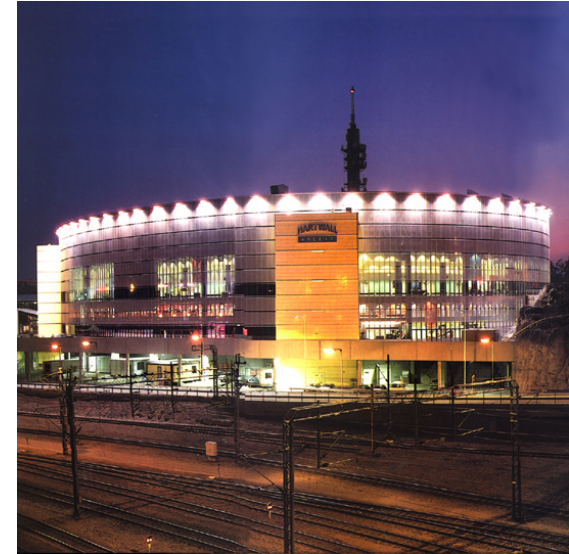
1990's

- 1993 The acquisition of Seinärakenne Oy
- 1994 The subsidiaries to St. Petersburg and Tallinn
- 1997 The powder coating company to Tallinn



2000's

- 2000 Inlook Sisustus Oy established
- 2001 The area office to Tampere
- 2002 E. Hiltunen Oy changes to Inlook Oy
- 2002 The powder coating company to Vilnius
- 2003 The area office to Turku
- 2003 The powder coating company to St. Petersburg
- 2003 The acquisition of Sisärakenne Kukkola Oy
- 2005 The acquisition of ESK Erikoissisäkatot Oy
- 2008 The acquisition of Sisärakenne Tecto Oy
- 2009 Re-organisation of business operations:
Inlook Group Oy, Inlook Oy,
Inlook Colortech Oy, Inlook Sisustus Oy,
Sisärakenne Kukkola Oy and foreign
subsidiaries
- 2012 New sales office to Espoo
- 2013 The acquisition of Dypoc Oy
- 2013 Gypsum Board Department established
- 2015 Dypoc Oy merged with Inlook Oy





Inlook Oy Offers:

- The most comprehensive assortment of ceiling products in Finland
- Professional installation services
- The selection of ceilings includes all well-known ceiling brands
- Services are available around Finland

Mineral Tiles Ceiling Panels



Armstrong Panels

- Acoustic ceiling panels pressed down of mineral pulp
- Plain, microperforated or travertin surface
- Standard white, other colours in Colortone-serie
- Common edge forms
- Available also for special circumstances

Interior Acoustic Panels

Ceiling Panels



Acoustic Panels

- Ceiling panels made of mineral wool
- Painted or coated by felt
- Edges and background surfaces protection processed
- Common edge forms
- Available also for special circumstances

Acoustic Gypsum Boards Ceiling Panels



Gypsum Boards

- Perforated or grooved
- Painted white or unpainted
- Common edge forms

Wood Fibre Panels

Ceiling Panels



Acoustic Wooden Panels

- Combined by magnesit or cement
- Manufacturer's standard colours
- Several edge forms and thicknesses

Linear Profiles

Metal Ceilings



Linear Profiles

- Made of aluminium or steel
- Painted to RAL-colours
- Plain or acoustic perforated
- Several widths, cut to size on demand

Linear Planks

Metal Ceilings



Metal Panels

- Usually made of aluminium
- Painted to RAL-colours
- Plain or acoustic perforated
- Several widths, cut to size on demand
- Panels form a closed ceiling surface

Planks & Tiles

Metal Ceilings

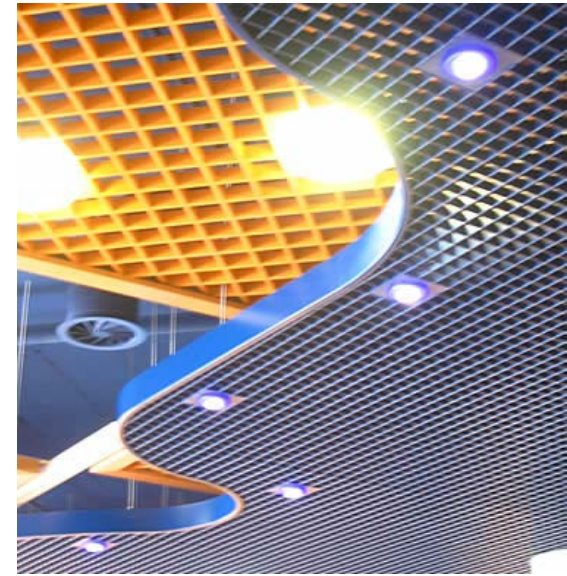


Metal Tiles

- Made of aluminium or steel
- Painted to RAL-colours
- Plain or acoustic perforated
- Several widths, cut to size on demand
- Lay-in-, Clip-in-, Hook-on-, and corridor tiles

Cell Ceilings

Metal Ceilings



Metal Cells

- Usually made of prepainted white or grey aluminium
- RAL-colours also available
- Several cell sizes and heights are available
- Lay-in- or integrated ceiling surfaces

Wire Meshes Metal Ceilings

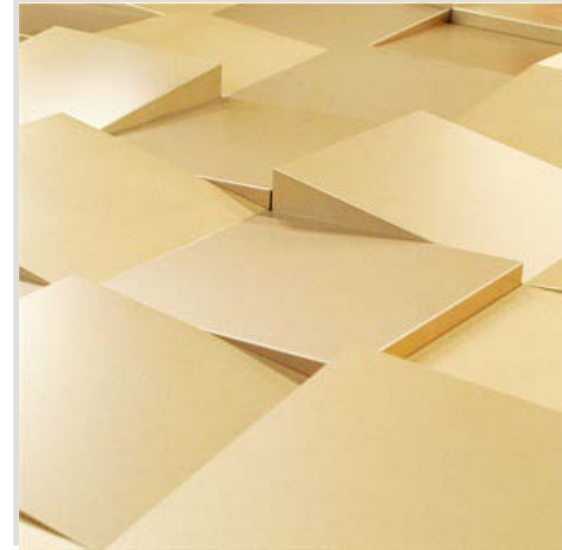


Metal Meshes

- Usually made of steel
- Manufactured by welding or extracting
- Mesh panels or cassettes pressed into the shape
- Painted to RAL-colours

Wood Veneered Panels

Wooden Ceilings

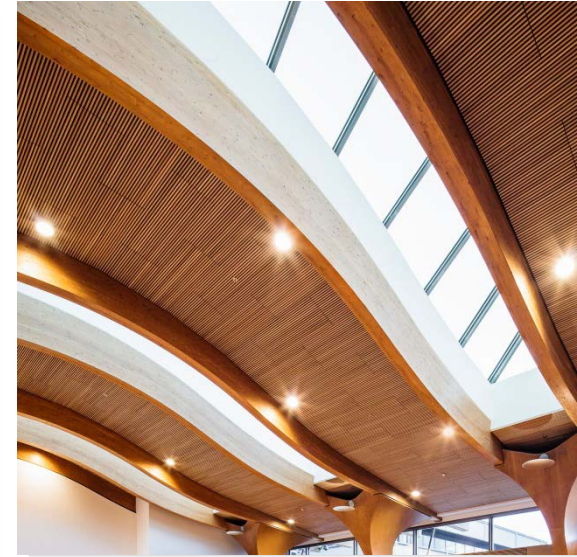


Wood Veneered Ceiling

- Gypsum cellulose fibre or MDF-basic board
- Surface treatment: lacquered, stained, oiled or painted
- Plain or acoustic perforated

Batten Strip Ceiling

Wooden Ceilings



INLOOK Linear WP

- Batten strip panels will be delivered e.g. of birch, pine or oak
- Surface treatment: lacquered, stained, oiled or painted; fire protection treatment possible



Skylights

Fire Protection Ceilings

Textile Ceilings

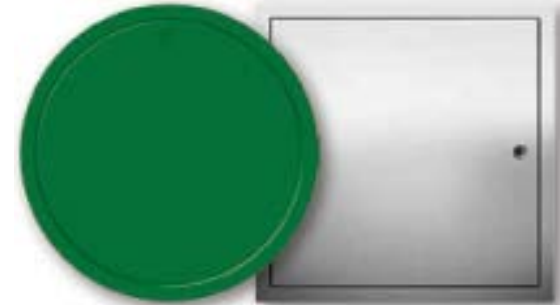


Architecture featuring wire mesh

- GKD-Decorative meshes

The walls of buildings into multimedia displays

- GKD-Mediamesh
- GKD-Illumesh



Access Hatches

- Flush access hatches
- Push-up gypsum board hatches
- dB-hatches
- Covering plates

Fire Rated Hatches

- EI 30
- EI 60

References

Ceilings

- **Shopping Center Kaari, Helsinki**
- **Skanska, Office House, Helsinki**
- **Shopping Center Veturi, Kouvola**
- **TYKS, Hospital, Turku**
- **Outotec, Head Office, Espoo**
- **Mårtensbro School, Espoo**
- **Tapiola-yhtiöt, Head Office, Espoo**
- **Serlachius Museum, Mänttä**





Removable and variable partition walls to the modern office interiors.

- Manufacturing
- Sales and marketing
- Product development
- Installation

INLOOK SLIDY

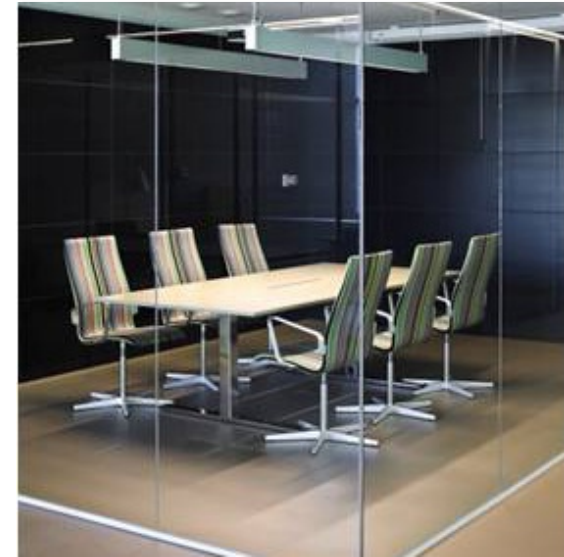
Glass Partitions with Sliding Doors



- Safety glass
- Frames available with RAL-colors
- Custom-made elements
- A variety of door handles available
- Also SLIDY-dB type with additional sound proof

INLOOK GLAZY

Glass Partitions with Silicone Joints



- Safety glass
- Frames available with RAL-colors
- Sliding or hinged doors
- Glasses can be decorated with tape or seriprint
- Glass joints silicone or aluminium profile

INLOOK WOODY

Wooden-Framed Glass Partitions



- Frames wood or MDF-profile
- Safety glass
- Frames finished with veneer or paint
- Available with sliding or hinged doors

INLOOK HANDY

Partition Walls with Omega Profile



- Gypsum board with vinyl wallpaper (alternatively finishing painted MDF-board)
- Spring loaded steel frame, pressed between floor and ceiling

Accessories

- Hooks for coats and paintings
- Notice boards
- Shelves for folders and magazines

INLOOK FLEXY

Partition Walls with Vertical V-joint



- Gypsum board with vinyl wallpaper (alternatively finishing painted MDF-board)
- Spring loaded steel frame, pressed between floor and ceiling
- Board edges are straight or V-shaped

INLOOK EASY

Partitions with Ready-Made Elements

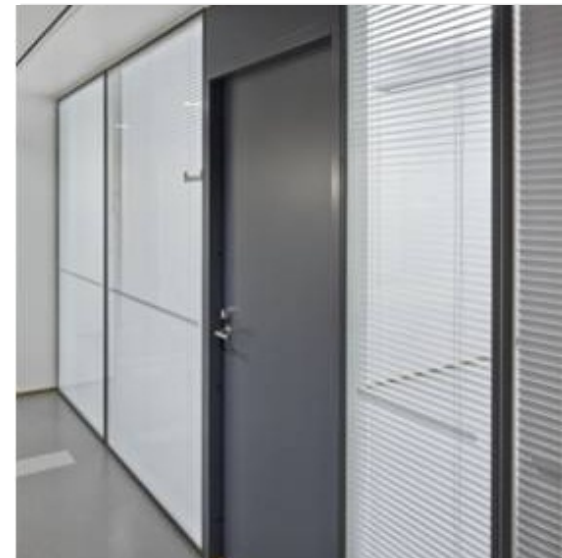


- Consists of prefabricated elements
- Skin plates 10 mm chipboard or 8 mm MDF-board
- Plywood frame
- Several types of windows and doors available

References

Partition Walls

- **Sampo Bank Plc**, around Finland
INLOOK GLAZY, INLOOK EASY
- **Business Center Pasilan Visio**, Helsinki
INLOOK SLIDY, INLOOK FLEXY
- **Real Estate Company Lintulahdenvuori**, Helsinki
INLOOK SLIDY, INLOOK FLEXY
- **Svenska Social & Kommunalhögskolan**, Helsinki
INLOOK WOODY, INLOOK HANDY, gypsum walls
- **TeliaSonera Finland Oyj**, Helsinki
INLOOK GLAZY, veneered wall claddings
- **Oy Gustaf Paulig Ab**, Helsinki
INLOOK GLAZY





- The technical sales units supply building materials and systems utilized in ceilings and partition walls
- The material service agencies also offer pick-up services



Inlook Services are available in Helsinki.

- Reasonable ceiling and partition wall works
- Maintenance and repair services

The Inlook powder coating services have specialized in powder coating of aluminium products utilized in demanding circumstances indoors and outdoors.

Our clients are professionals of building trade, such as facade and interior constructors, subcontractors of shipbuilding industry and window and door manufacturers.

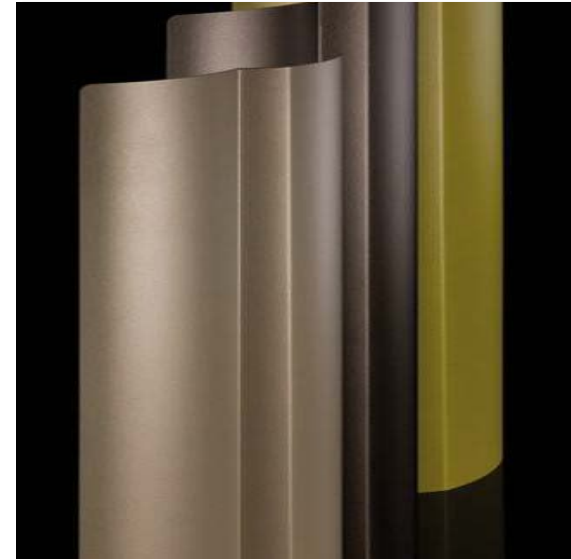
Maximum size of the coated articles:

7200 x 1500 x 400 mm

Powder coating units:

- Tallinn
- Vilnius
- St. Petersburg
- Helsinki (sales office)

Quality assurance by GSB quality system.





Our Strengths

- High quality
- Big capacity
- Fast deliveries
- Flexibility and versatility
- Competitive service process

The sheet metal department of Inlook Colortech Oy manufactures sheet metal products, metalworks and – compositions for manufacturing trade and construction industry. The most common materials used are steel and aluminium.

Our Merits are:

- Subcontracting of advanced subassemblies
- Trimming of special forms
- Welding works
- Mechanical assembly
- Product development
- High quality
- Reliability and effectiveness
- Competitive service capacity





Even small consignments from the same place.

Own Production:

- Access hatches
- Fire rated hatches

Agencies:

- Helsinki and Tallinn

Inlook Sisustus Oy

Design & Build operation model covers all sectors of interior building:

- Preliminary planning
- Architectural design
- Planning and contracting of heating, plumbing, ventilation and electrical installation
- Interior contracting
- Official inspections
- Instructions for use and maintenance
- Procurement of furniture and equipment



Rockfon Mono Acoustic



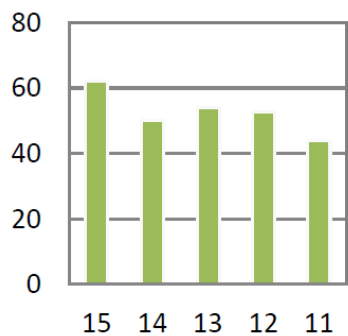
Rockfon Mono

- Seamless acoustic monolithic ceiling and wall lining system
- M1 Indoor Climate Label
- Fireclass A2-s1, d0
- Coloured surfaces are available

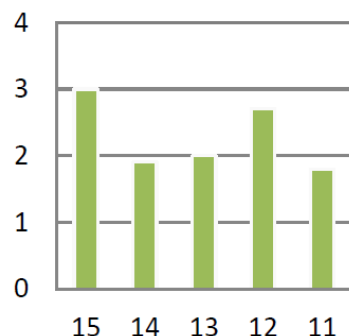
Key Figures

Inlook Group 2015-2011 milj. euros

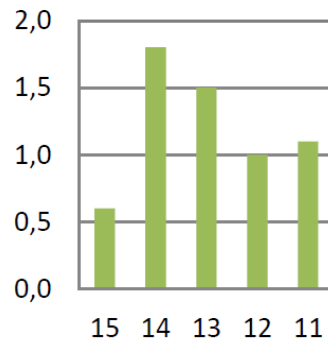
Turnover



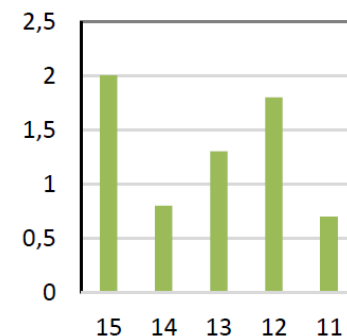
Income before extraordinary items



Net investments



Net operating profit



- **Customer orientation**
- **Professional skill**
- **Openness and the respecting of individuals**
- **Profitability of business operations**
- **Pioneer**



Thank you for your interest!